

Emission standard of air pollutant for bulk gasoline terminals

(发布稿)

1

2

3

3.1

bulk gasoline terminal

3.2

gasoline vapor

3.3

vapor emission concentration

3.4

gasoline loading

3.5

gasoline receiving

3.6

bottom loading

3.7

floating roof tank

3.8

vapor recovery processing equipment

3.9

vapor collection system leakage point

3.10

hydrocarbon gas detector

4

4.1

4.3.3

5

5.1

5.2

5.3

6

6.1

2

6.2

A

A.1

A.2

A.2.1

A.2.2

A.2.3

A.3

A.3.1

A.3.2

A.3.3

B

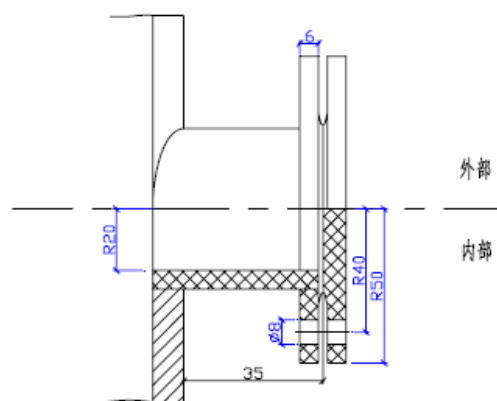
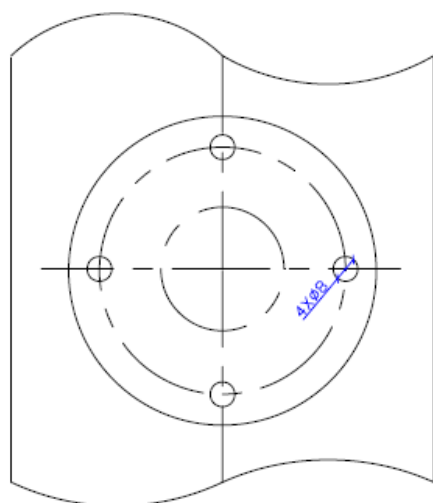
B.1

B.2

B.2.1

B.2.2

B.2.3



B.2.4

B.2.5

B.3

B.3.1

B.3.2

B.3.3

B.3.4

B.3.5

$$E = 1 - \frac{(1 - \alpha_1)C_2}{(1 - \alpha_2)C_1} \times 100\%$$

E

C_1

α_1

C_2

α_2

$$\frac{22.4C}{1000M}$$

C

22.4

M

C

$$C = C \frac{273 - t_f}{273} \frac{101300}{B_a P_{fv}}$$

C

t_f

B_a

P_{fv} t_f

B. 3. 6

B. 4

B. 4. 1

B. 4. 2

B. 4. 3

C.3

C.4

C.5
